



Package content

Verify the contents in the box:

- ECB600
- Power adapter
- RJ-45 Ethernet Cable
- 2.4GHz Detachable Antenna x2
- 5GHz Detachable Antenna x2
- Quick Installation Guide
- CD with User Manual and EZ Controller

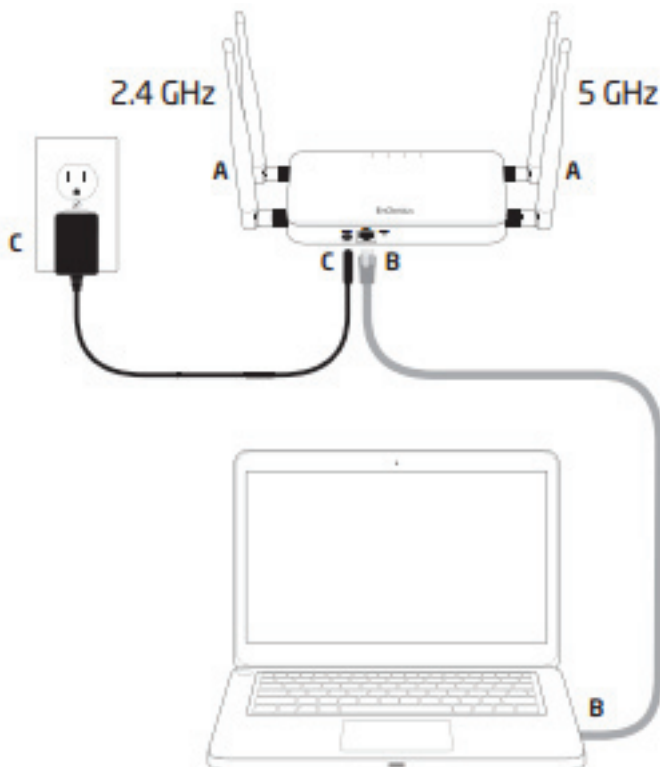
Minimum Requirements

- Broadband Internet Service (Cable or DSL Modem)
- Internet Browser (Internet Explorer, Safari, Firefox, Chrome)

Connecting the ECB600

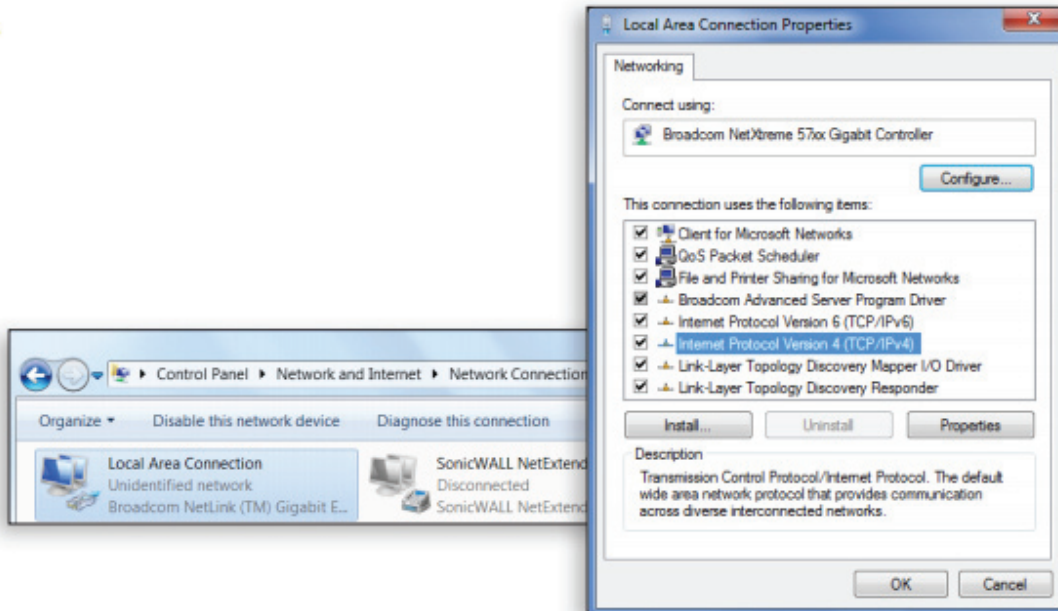
1. Please install the antennas as shown below.
2. Connect one end of the Ethernet cable into the LAN port of the ECB600 and the other end to the Ethernet port on the computer.
3. Connect the Power Adapter to the DC-IN port of the ECB600 and plug the other end in to an electrical outlet.

Note: The ECB600 supports both IEEE 802.3at PoE (Power over Ethernet) and regular power adapter. You should use either one as the power source. Please do not apply both at the same time.

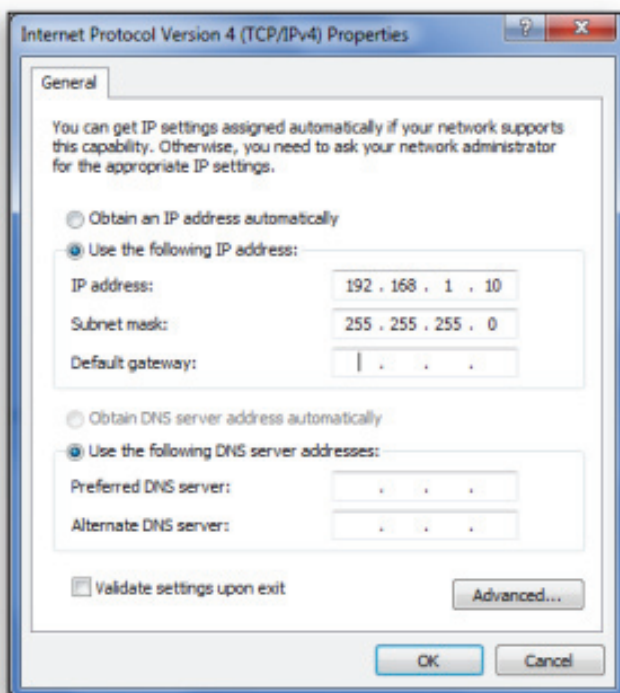


IP Address Configuration

A. Once your computer is on, ensure that your TCP/IP is set to On or Enabled. Open Network Connections and then click Local Area Connection. Select Internet Protocol Version 4 (TCP/IPv4).



B. If your PC is already on a network, ensure that you have set it to a Static IP Address on the interface. (Example: 192.168.1.10 and the Subnet Mask address as 255.255.255.0).





ECB600 Setup

A. To configure the ECB600, open a web browser. In the address bar of the web browser, enter **192.168.1.1** and hit enter.

http://192.168.1.1

B. A login screen will appear. By default, the username of the ECB600 is admin and the password is admin. Enter the current username and password of the ECB600 and then click **Login**.

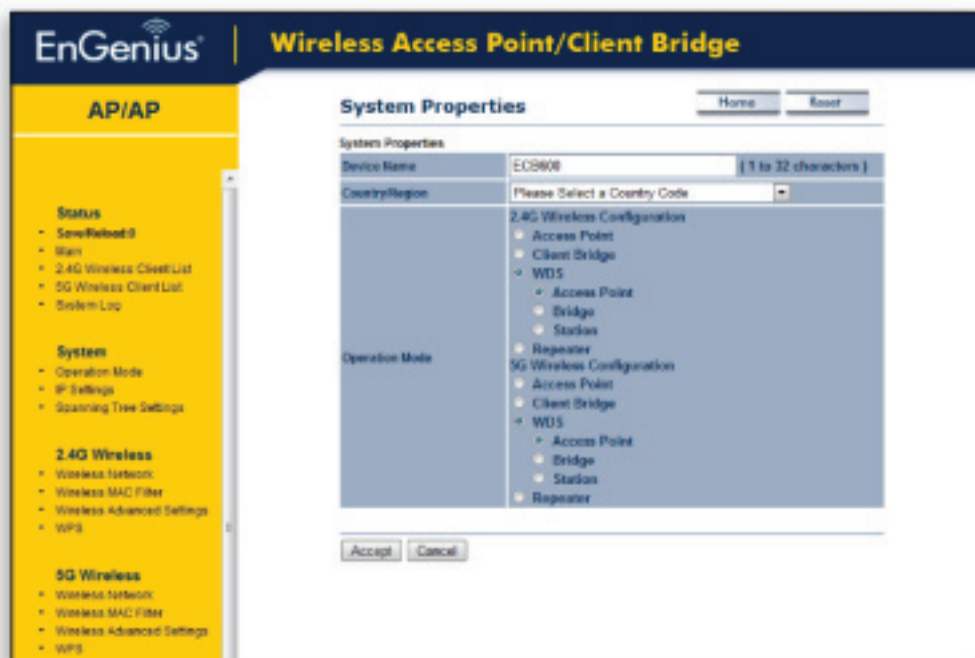


The login screen displays the EnGenius logo at the top. Below it, there are two input fields: 'Username: admin' and 'Password: *****'. At the bottom, there are two buttons: 'Login' and 'Cancel'.

Switching Modes

A. This device can operate in the following modes: Access Point, Client Bridge, WDS AP, WDS Bridge, WDS Station and Repeater

B. Click on the Operation Mode link under the System Properties.





Note:

Maximum data rates are based on IEEE 802.11 standards. Actual throughput and range may vary depending on many factors including environmental conditions, distance between devices, radio interference in the operating environment, and mix of devices in the network. Features and specifications subject to change without notice. Trademarks and registered trademarks are the property of their respective owners. For United States of America: Copyright © 2013 EnGenius Technologies, Inc. All rights reserved.

